

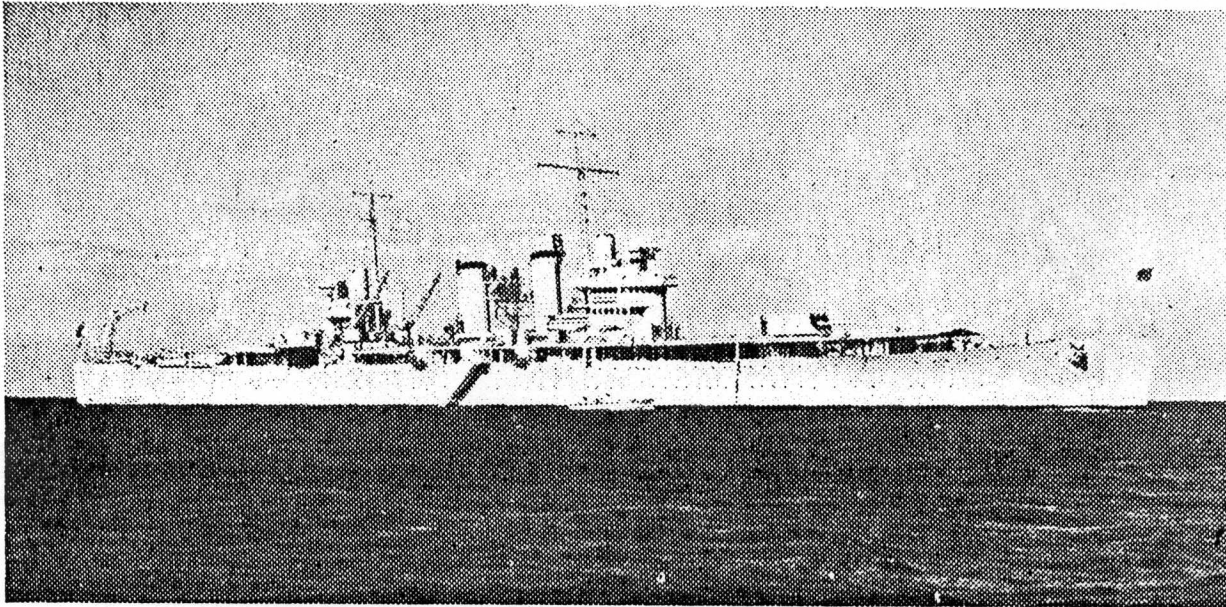
HOMECOMING

BALL

Masonic Temple
Long Beach, California

† ★ †

November 1st, 1940



U. S. S. Philadelphia



The U. S. S. PHILADELPHIA, authorized by act of Congress of June 16, 1933, was built at the U. S. Navy Yard at Philadelphia, Pa. The keel was laid on May 28, 1935, and she was launched on November 17, 1936. The PHILADELPHIA is a 10,000 ton light cruiser and was first of her type to enter the water. She was designed and built under the limitations imposed by the London Naval Treaty.

The U. S. S. PHILADELPHIA has a distinguished name, not only because she is named for the third largest city in the United States, but also because she is the fifth vessel so named to carry the flag of our Country. The preceding four vessels had glorious careers.

The first PHILADELPHIA was a gondola, not much larger than a fifty-foot motor launch; she was sunk in the Battle of Lake Champlain, October 11, 1776.

The second PHILADELPHIA was built in the old Philadelphia Navy Yard in 1779 and was one of the most powerful vessels of her time. On her third and last cruise in the fall of 1803 she ran aground on uncharted rocks in the Harbor of Tripoli while doing blockade duty. She was attacked and captured and burned by a force of seventy men led by Stephen Decatur.

The third PHILADELPHIA was a captured iron side-wheel steamer and did yeoman service throughout the Civil War. She was sold in 1865.

The fourth PHILADELPHIA was a 4,000 ton cruiser built in Philadelphia by Wm. Cramp & Sons during the years 1887 to 1890. During the Spanish War she was assigned cruising duty in the Pacific and saw action in Samoa in 1899. She was sold in 1927.

The fifth PHILADELPHIA, our own ship was commissioned on the twenty-third of September, 1937. Since that time she has had the record of answering every call placed upon her.

2



Captain Vance D. Chapline, U. S. Navy
COMMANDING OFFICER

New Staff



The Officers and Men of the U. S. S. PHILADELPHIA
welcome aboard

~~REAR ADMIRAL H. K. HEWITT and STAFF~~
Cruiser Division Eight

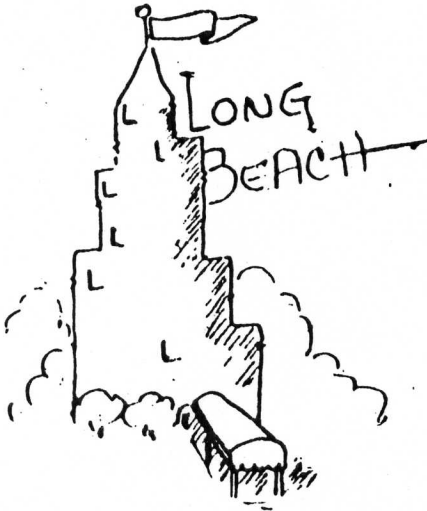
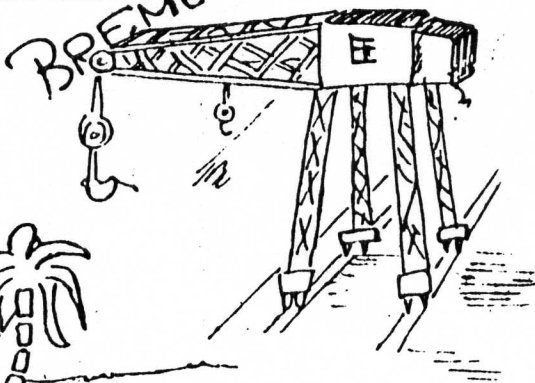


THE CRUISE



Lahaina, T.H.

BREMERTON, Wn.



Honolulu



The Cruise



Long ago, or shall I say but over half-a-year - - anchors aweigh, farewell, a few tears, and the U. S. S. PHILADELPHIA bids "till we meet again" to its home port sunny California, while the crew marks six weeks off the calendar. The navigator prepares his charts, officers and men exercise their "sea legs", and the cruise is started.

Days and nights at sea, rolling decks, then in the early morning a surprise, the welcome sight of land, Maui-Hawaiian Islands. Days of rare treats follow with leis and new thrills of a new land for most of us. We are overflowed with adventure and the meanings of "Aloha", to relate to eager ears when we return back to our home port: excursions over mountains, exotic Honolulu, Waikiki, Lahaina, Haleakula, Hawaiian entertainment, picnics, the spirit of Hawaii, Maneuvers, a ship alive with souls and energies of men.

New orders, the exigencies of the service, and we are ordered to remain in a distant land for further training. The men of the U. S. S. PHILADELPHIA bear up, with a fortitude and calm determined resignation that of the real men of the sea, tempered by ageless tradition. Officers and men join in informal good-fellowship, with chins up, watchful, wishing and working and waiting, and settle down to maneuvers and drills, intermingled with happy-hours.

And then from the tropical sea-scapes, to the fir-studded shores of the Northwest, the contrast, new sights, Alaskan souvenirs, Seattle with its colorful Indians, and all the thrills of a new city. Letters go home fat with adventure.

With memories clinging, we sail deep in to the southern climes to cross the Equator where shell-backs christened the pollywogs in the domain of Neptunus Rex.

With it all, the ship is whipped into a fighting unit, proud and eager. Weeks at sea give the men their silk, and then compensation, ordered to our home port, for that respite with our loved ones, with stronger hearts, and better men at a new welcome phase of an eventful cruise.

—A. Lizotte.





Committee of Arrangements

Chairman

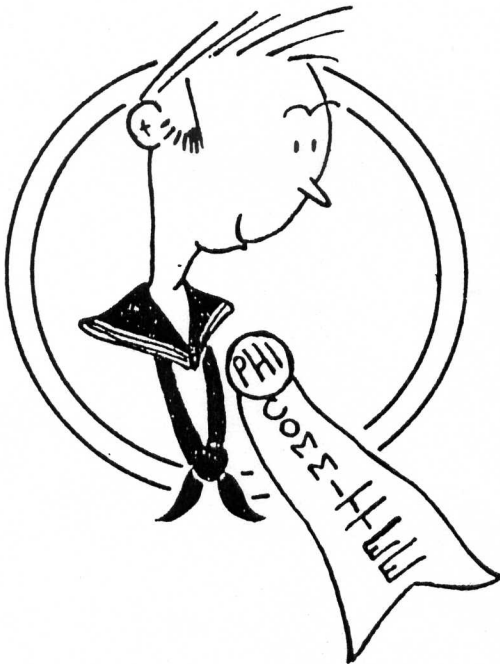
~~Lieut Comdr. E. A. Seay, U. S. N.~~

Assistant Chairman

~~Lieutenant J. B. Duval, jr., U. S. N.~~

Decorations

~~x~~ Lieutenant V. F. Gordinier, U. S. N.
 Ensign G. M. Hawes, U. S. N.
 W. F. Maguire, CSM, U. S. N.
 C. A. Hergert, CCM, U. S. N.
~~G. A. Newport, CEM, U. S. N.~~



Supper

~~Lieutenant J. S. Bierer (SC) U. S. Navy~~
 Chief Pay Clerk G. B. Abbaduska U. S. Navy
 W. W. Cole, CCStd U. S. Navy

Refreshments

~~x~~ Lieutenant J. B. Duval, jr. U. S. Navy
~~x~~ F. E. Gardiner, CWT. U. S. Navy
~~x~~ G. A. Moller, Sgt. U. S. Marine Corps

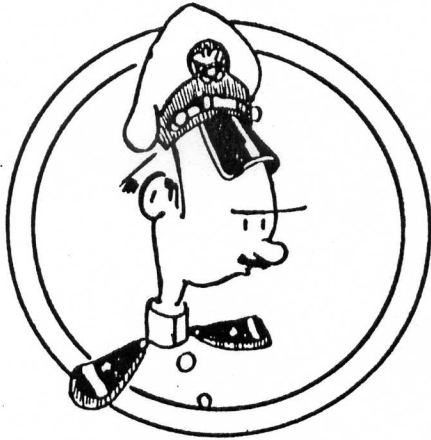
Music Entertainment, Programs

~~x~~ Lieutenant (jg) W. G. Irwin (ChC) U. S. Navy
~~x~~ J. L. Fox, Bmstr. U. S. Navy
~~x~~ A. G. Keller, PhM3c U. S. Navy

Floor Committee and Ushers

S. S. Heard, CBM, U. S. N., Chairman

x F. E. Gardiner, CWT, (B Div)	S. J. Torino, SF2c, (R Div)
x G. A. Newport, CEM, (E Div)	x G. DeLisle, RM2c, (V Div)
O. P. Mitchell, BM1c, (1st Div)	J. S. Jacobs, SK2c, (S Div)
x W. C. Moore, TC1c, (2nd Div)	x A. Ewanchuk, GM3c, (4th Div)
x A. C. Chambers, MM1c, (M Div)	E. G. Morey, QM3c, (N Div)
O. S. Mercer, MM1c, (A Div)	x J. Fitez, Cox, (6th Div)
x Turnipseed, T. E., RM1c, (Flag)	x D. S. Kight, RM3c, (C Div)
A. W. Woods, BM2c, (R Div)	x A. G. Keller, PhM3c, (H Div)
x G. A. Moller, Sgt., (7th Div)	W. A. Matt, Sealc, (3rd Div)
x J. S. Cwynar, FC2c, (F Div)	E. Toepfert, Sealc, (5th Div)



Ship's Company

~~Captain Vance D. Chapline, U. S. Navy~~
MOORE COMMANDING OFFICER



~~Commander Humbert W. Zioli, U. S. Navy~~
SMITH EXECUTIVE OFFICER





Gunnery Department



- × Lieut. Comdr. E. A. Seay Gunnery Officer
- × Lieutenant E. S. Addison Assistant Gunnery Officer
and Aerial Defense Officer

FIRST DIVISION

Ensign R. L. Dodane "1" Division Officer

Mitchell, O. S., BM1c
 Erdahl, H. S., GM1c
 Sincavage, J. A., TC1c
 Schuler, P. J. K., BM2c
 Braun, J. T., jr., COX
 Miller, R. T., GM3c
 Fullum, J. E., Sealc
 Fifick, N., Sealc
 Evans, J. E., Sealc
 Riley, W. L., Sealc
 Devine, J. V., jr., Sealc
 Donleycott, K., Sealc
 Dietz, T. R., Sealc
 Mayer, G. O., Sealc
 Divine, D. R., Sea2c
 Watson, J. A., Sea2c

Smith, N., Sea2c
 Sobczyk, E. A., Sea2c
 Griffin, L. L., Sea2c
 Carr, J. C., Sea2c
 Shartzler, H., Sea2c
 Hallett, E. W., Sea2c
 Nobrega, G., Sea2c
 Hester, J. S., Sea2c
 Hendrix, L., Sea2c
 Bayha, R. E., Sea2c
 Sufficool, R. W., Sea2c
 McLean, J., Sea2c
 Tate, W. B., Sea2c
 Cooper, J. E., Sea2c
 Lawson, A. H., Sea2c
 Dideon, G. E., Sea2c

SECOND DIVISION

× Ensign E. R. Peterson "2" Division Officer

White, J. F., BM1c
 Moore, W. E., TC1c

Rader, R. E., COX
 Minister, J. J., GM3c



SECOND DIVISION (Continued)

LaPorte, J. H., GM1c
Hoff, H. F., BM2c
McCormick, R. R., Sealc
Ciccarelli, C. L., Sealc
Fulmer, B. O., Sealc
Fall, D. M., Sealc
Arey, J. W., jr., Sealc
Dennis, D. H., Sea2c
Janeczko, J., Sea2c
Hurtik, A. J., Sea2c
Ruhl, C. G., Sea2c
Matyka, F., Sea2c
Boggs, S. E., Sea2c
Rorrer, M. G., Sea2c
Rice, E. R., Sea2c

Walker, H. H., jr., Sea 1c
Drasek, H. B., Sealc
Harrington, W. J., Sealc
Lindley, R. M., Sea2c
Christian, G. J., Sea2c
McDonough, W. F., Sea2c
Covert, G. E., Sea2c
Sullivan, J. R., Sea2c
Smith, D. E., Sea2c
Riggs, G. B., Sea2c
Glover, A. L., Sea2c
Gleeson, J. T., Sea2c
Overand, J. F., Sea2c
Barbee, R. E., Sea2c

THIRD DIVISION

X Lieut. (jg) C. B. Farwell "3" Division Officer

Love, R. T., CTC
Beaudo, L., BM1c
Day, H. E., GM1c
Harding, A., BM2c
Short, H. A., BM2c
Friday, F., COX
Moore, H. B., COX
Heath, H. P., jr., GM3c
Mellor, G. E., Sealc
Kwasniewski, H. J., Sealc
Whitehead, T. R., Sealc
Dodd, J. W., Sealc
Collins, P. N., Sealc
Mazzuca, A., Sealc
Fugh, L. E., Sealc
Matt, W. A., Sealc
Storm, R. L., Sealc
McLean, E. W., Sealc

Mercer, L. K., Sealc
McKeeton, D., Sealc
Martin, J. R., Sealc
Mayes, J. C., Sea2c
Money, B. B., Sea2c
Mattson, D. L., Sea2c
Gautreau, C. C., Sea2c
Roy, B. F., Sea2c
Collins, M. U., Sea2c
Underkoffer, G. W., Sea2c
Hickman, F. C., Sea2c
Rallens, J. S., Sea2c
Munich, A. S., Sea2c
Clark, J. P., Sea2c
Dukelow, T. E., Sea2c
Dobson, J. T., Sea2c
Fullbright, M. O., Sea2c
Gilmore, D. N., Sealc

FOURTH DIVISION

X Ensign A. C. Edwards "4" Division Officer

Christie, C. E., BM1c
Borum, A. T., jr., TC1c
Harold, H. A., BM2c
Branson, R. K., GM3c
Butter, H. U., COX
Loudon, R. C., COX
Ewanchuk, A., GM3c
Mitchell, K. H., Sealc
Cheek, J. E., Sealc
Moody, H. E., Sealc
Perillo, M. L., Sea 1c
Smith, H. C., Sealc
Parker, C. W., Sealc
Adams, J. R., Sealc
Brown, H. L., Sealc
Shaw, E. M., Sealc
Anderson, O. W., Sealc

Mazolis, A., Sealc
Monkiewicz, M. W., Sealc
Disney, J., jr., Sealc
Williams, J. H., Sealc
McPherson, H. A., Sea2c
McLaughlin, E. J., Sea2c
Hazen, W. E., Sea2c
Patee, E. E., Sea2c
Gragg, H. D., Sea2c
Ledsinger, H. W., Sea2c
Misunas, W. J., Sea2c
Krajala, A. E., Sea2c
Post, W. B., Sea2c
Magnano, Y., Sea2c
Clark, J. M., Sea2c
Marts, M. M., Sea2c

FIFTH DIVISION

Ensign J. L. May **SMC** . . . "5" Division Officer

Batcher, S., BM1c
 Bitcon, P., BM2c
 Wall, C. L., GM1c
 Troutmna, F. R., GM2c
 Muller, R. A., GM2c
 Poore, R. C., GM3c
 Hula, W. K., COX
 Pickens, E. E., Sealc
 Willing, J. A., Sealc
 DeLavalla, V. E., Sealc
 O'Berry, P. E., Sealc
 Burtell, S. D., Sealc
 Felt, L., Sealc
 Northrup, A. E., Sealc
 Werum, R. J., Sealc
 Wassus, J., Sealc
 Parks, W. H., Sealc
 Lansing, W. H., Sealc
 Toepfert, E. G., Sealc
 Beers, H. W., Sealc
 Jett, L. D., Sea2c
 Lane, R. E., Sea2c

Davis, J. W., GM3c
 Maxham, J. L., GM3c
 Pinkham, C. F., GM3c
 Krapish, R. V., Sealc
 Strong, J. C. F., Sea2c
 Lowe, C. E., Sealc
 Opalak, P. A., Sea2c
 Ball, C. W., Sea2c
 Lato, V. J., Sea2c
 Benson, C. E., Sea2c
 Gentile, J. J., Sea2c
 Hopkins, M. N., Sea2c
 Dunlap, J. C., Sea2c
 Hansen, J. C., Sea2c
 Christoff, J. A., Sea2c
 Mangonio, J. A., Sea2c
 Rolf, K. W., Sea2c
 Hogue, V. V., Sea2c
 West, L. M., Sea2c
 Houchen, H. A., Sea2c
 Rainbolt, T. R., Sea2c
 Reynolds, R. E., Sea2c

SIXTH DIVISION

~~Lieutenant H. N. Larson "6" Division Officer~~

~~Ensign L. Marcy Junior Officer, "6" Division~~

~~Ensign F. L. Englander Junior Officer, "6" Division~~

~~Carpenter, C. D., CGM~~ **ENSIGN**
~~Levesque, J., BM1c~~
~~McNulty, G. C.~~ **CHEIF**
~~Sharpe, W. L., BM1c~~
~~Frye, K. E., GM2c~~ **CHEIF GM**
~~Johnson, J. C., GM2c~~
~~Carlson, A., COX~~ **GM2c**
~~Fitez, J. S., COX~~
~~Hardin, V. E., COX~~ **GM2c**
~~Kimmel, J. L., COX~~ **GM2c**
~~Lacy, H., Jr., GM3c~~
~~Phelan, D. W., GM3c~~ **CHEIF AD**
~~Furner, E. U., Sealc~~
~~Ficklin, G. L., Sealc~~ **GM3c**
~~Meskimen, C. R., Sealc~~
~~Pariscarivich, A., Sealc~~ **CON**
~~Ely, A. M., Sealc~~
~~Life, A. E., Sealc~~
~~Nobht, W. J., Sealc~~ **GM3c 2nd**
~~Fennan, R. J., Sealc~~
~~Whitman, H. W., jr., Sealc~~
~~Rood, C. C., Sealc~~
~~Hinson, E. B., Sealc~~ **GM3c**
~~Rohr, F. E., Sealc~~ **COX**

~~Lockhart, W. F., Sealc~~
~~Lambdin, W. H., jr., Sealc~~
~~Self, D., Sealc~~ **CHEIF GM**
~~Horne, A. B., Sealc~~ **GM3c**
~~Foster, C. A., Sealc~~
~~Andre, E. W., Sealc~~ **COX**
~~Macilla, J. W., Sealc~~
~~Stefko, E. A., Sealc~~
~~Merritt, H. H., jr., Sealc~~
~~Copeland, J., Sealc~~ **GM3c**
~~Domey, T. A., Sealc~~ **GM3c**
~~Patula, P. W., Sealc~~
~~Nail, W. R., Sealc~~ **GM3c**
~~Williamson, V., Sealc~~ **GM3c**
~~Taylor, W. W., Sealc~~ **GM3c**
~~Merritt, H. M., Sealc~~ **GM3c**
~~Arnwell, O. B., Sealc~~
~~Zimmerman, H. H., Sealc~~ **GM3c**
~~Potter, F., Sealc~~
~~Strike, W. H., Sealc~~ **GM2c**
~~Jones, B. B., Sealc~~
~~Ramsey, K., Sealc~~
~~Hewins, L. L., Sealc~~ **GM3c**
~~Smith, B., Sealc~~

SIXTH DIVISION (Continued)

~~Durison, J. W., Sealc~~ ~~COX BM21~~
~~Cotta, L. V., Sealc~~
~~Smith, G. M., Sealc~~
~~Webster M. B., Sealc~~
~~Reider, A. N., Sealc~~
~~Schneider, J. F., Sealc~~
~~Butts, J. P., Sealc~~
 *** ~~Williamson, C. M., Sealc~~
~~Clark, E. E., Sealc~~ ~~COX BM26~~
~~Smith, G. F., jr., Sealc~~
~~Holt, A. B., Sealc~~
~~Gully, N. L., Sealc~~

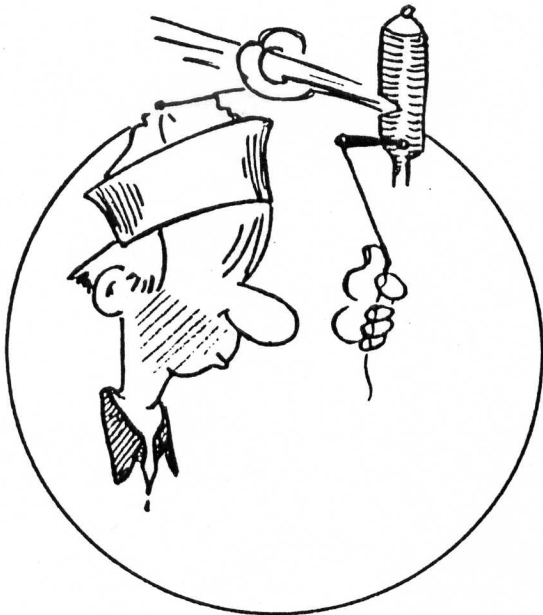
~~Adams, L. R., Sea2c~~
~~Wetherington, J. S., Sealc~~
~~Innis, H. E., Sealc~~ ~~GM3c~~
~~Letters, F. J., Sealc~~ ~~COX BM32~~
~~Avant, T. R., Sealc~~ ~~GM 30~~
~~Green, J. C., Sealc~~
~~Creeling, M. H., Sealc~~
~~Martin, H. E., Sealc~~ ~~COX~~
~~Simcock, W. J., Sealc~~
~~Lowrey, J. L., jr., Sealc~~ ~~GM 30~~
~~Norwood, P. D., Sealc~~

F. DIVISION

Lieut. (jg) R. A. Paton "F" Division Officer
 Ensign P. N. Shamer Assistant "F" Division Officer
 Ensign F. J. Graziano Junior Officer, "F" Division

Shepard, E. R., CFC
 Derby, R. G., GM1c
 Newbern, D. M., GM1c
 Heitzman, A. J., FC1c
 Roberts, W. J., FC1c
 Cwynar, J. S., FC2c
 McMullen, A. W., FC2c
 Stein, C. P., Y2c
 Boyer, W. J., FC3c
 Coleman, L. F., FC3c
 Hall, O., FC3c
 Massey, R. B., FC3c
 Oleskowitz, M. A., FC3c
 Walsh, D. W., FC3c
 Williams, B. B., FC3c
 Williams, E. L., FC3c
 Westfall, D. R., Sealc
 Morris, J. C., Sealc
 Brummett, O. K., Sealc
 Feigenberg, E. L., Sealc
 Bissett, H. J., Sealc
 Ona, T. J., Sealc
 Jurkites, J. B., Sealc
 Ewen, S. L., Sealc
 Weiss, J., Sealc
 Gray, H. D., Sealc

Hooper, R. C., Sealc
 Teder, L. F., Sealc
 Gray, W. P., Sealc
 Roach, W. H., Sealc
 Kobel, P., Sealc
 Soczek, W., Sealc
 Crisman, V. C., Sealc
 Egger, V. A., Sealc
 Kulczynski, A., Sealc
 Cloutier, D. R., Sealc
 Denton, H. H., Sealc
 Cancellara, A. J., Sealc
 Blaine, J. S., Sea2c
 Hargitt, R. C., Sea2c
 Foust, C. J., Sea2c
 Cline, J. C., Sea2c
 Lyon, J. J., Sea2c
 Urrizola, P. J., Sea2c
 Anderson, S. A., Sea2c
 Mineo, J. A., Sea2c
 Johnson, M. A., Sea2c
 Glaze, E. A., Sea2c
 Thomson, A. R., Sea2c
 Murphy, J. D., Sea2c
 Jones, P. C., Sea2c
 Lancaster, W. A., Sea2c



Engineering

Department



Lieutenant G. G. Crissman Engineer Officer

Lieutenant J. B. Duval, Jr. Asst. Engineer Officer

"A" DIVISION

Ensign F. B. Grubb "A" Division Officer

Harris, A. R., CMM
Michel, S. L., CMM
Sersain, S. L., CMM
Beck, C. E., MM1c
Chambers, A. C., MM1c
Higgins, C. D., MM1c
McCahan, J. E., MM1c
Mercer, O. S., MM1c
Tatters, W. H., MM1c
Knapp, F. L., MM2c
Rutherford, H. J., MM2c
Thompson, T. K., MM2c
Yackowich, E., Y3c
Preslupski, S., F1c
Rocker, F., F1c
Schulte, R., F1c
Tarvin, D. R., F1c

Adriance, C. H., F2c
Park, C. E., F2c
Rowehl, W. D., F2c
Shartrand, L. S., F2c
Barnes, W. L., F2c
Blair, E., F3c
Brant, J. A., F3c
Connolly, J. H., F3c
Dermer, J. L., F3c
Doran, B. F., F3c
Eickenhorst, J., F3c
Johnson, J. H., F3c
Keeffe, J. R., F3c
Scoggins, J. W., F3c
Spriggs, G. M., F3c
Stasch, D. R., F3c
Brandt, A. M., Sea2c

"B" DIVISION

Machinist L. H. Stasney "B" Division Officer

Balthazar, J. J., CWT
Gardiner, F. E., CWT
Gilley, G. L., CWT
Jensen, M. M., CWT
Law, J., CWT
Neill, T. J., CWT
Little, J. D., WT1c

Ward, W. E., CWT
Warner, G. E., CWT
Dews, W. P., MM1c
Boyle, M. R., WT1c
Hahnah, W. M., WT1c
Kohls, R. R., WT1c
Buckingham, P. L., F3c



"B" DIVISION (Continued)

McClafferty, B., WT1c	Criss, J. N., F3c
Oniks, C., WT1c	Degross, R. E., F3c
Rich, W., WT1c	Drake, B. C., F3c
Sammons, W. O., WT1c	Drake, K. M., F3c
Smith, C. M., WT1c	Droughon, A. B., F3c
Leiby, H. K., MM2c	Dunn, R. L., F3c
Baird, C. E., WT2c	Ethridge, F. M., F3c
Harrison, L. A., WT2c	Fink, G. R., F3c
Henderson, F. D., WT2c	Fleming, R. A., F3c
Johnston, V. H., WT2c	Gerard, D. A., F3c
Katherman, E. E., WT2c	Halstead, J. M., F3c
Lackier, N., WT2c	Hendricks, J. F., F3c
Matus, A. W., WT2c	Honchosky, J., F3c
Maxfield, C. L., WT2c	Kalcich, M. P., F3c
Maxfield, C. L., WT2c	Lampkin, G. H., F3c
Phillips, L. O., WT2c	Mahaney, G. O., F3c
Price, H. A., WT2c	Merrill, C. E., F3c
Rogers, L., WT2c	Mills, R. P., F3c
Walker, E. E., WT2c	Mund, R. A., F3c
Weinacht, R. J., WT2c	Sanford, L. G., F3c
Morrison, K. W., Bmkr2c	Savage, E. E., F3c
Bates, K. R., F1c	Spencer, H. A., F3c
Baurs, H. A., F1c	Stanton, A. S., F3c
Brandenburg, R. W., F1c	Stephenson, R. L., F3c
Hightower, A. M., F1c	Taylor, J. E., F3c
Peterson, G. C., F1c	Williams, R. L., F3c
Vasslowski, C., F1c	Baer, W. A., Sea2c
Burden, L. C., F2c	Dumar, W., Sea2c
Gut, K. A., F2c	Ewy, K. E., Sea2c
Howard, W. F., F2c	Funkhouser, A. P., Sea2c
Mason, B. L., F2c	Jackson, G. L., Sea2c
Peterson, T. S. M., F2c	Powers, C. E., Sea2c
Schneider, C. J., F2c	Rolfe, J. H., Sea2c
Sunderland, W. R., F2c	Ryan, E. H., Sea2c
Allen, C. A., F3c	Smith, B. E., Sea2c
Brannon, F. B., F3c	Stouder, R. L., Sea2c
Briggs, E. A., F3c	Wolf, E. R., Sea2c

"E" DIVISION

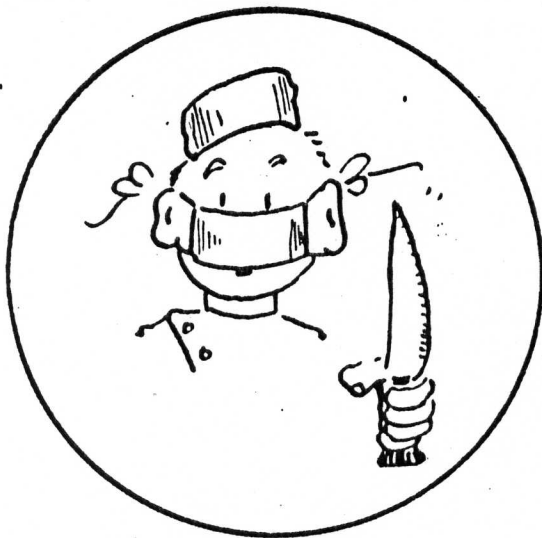
Lieut. (jg) A. F. Hindrelet, USNR	"E" Division Officer
Chief Electrician C. D. Keller	"E" Division Officer
Cissel, C. A., CEM	Hughes, G. R., EM3c
Harrelson, H., CEM	Kerns, A. J. T., EM3c
Newport, G. A., CEM	Larsen, C. E., EM3c
Apgar, H. R., EM1c	Long, L. L., EM3c
Cleveland, J. M., EM1c	Philpot, W. V., EM3c
Dougherty, W. G., EM1c	Ridge, F. D., EM3c
Henderson, P. R., EM1c	Simko, J. G., EM3c
Maski, W., EM1c	Simon, S., EM3c
Rather, C. B., EM1c	Swably, O. A., EM3c
Spitzer, C. B., EM1c	Leiter, J. J., F3c
Heath, H., EM2c	McCollum, W. F., F3c
Hello, J., EM2c	Ridenour, M. O., F3c
Kaspar, G. S., EM2c	Root, F. L., F3c
Koch, L. J., EM2c	Wurm, M. O., F3c
Lindsey, E. F., EM2c	Settlemyer, L. W., Sealc
Smith, S. V., EM2c	Williams, J. R., Sealc
Wolf, R. C., EM2c	Work, E. R., Sealc

ENGINEERING DEPT. (Continued)

Chief Machinist H. K. Davidson "M" Division Officer

Rhodewalt, H. O., CMM
 Lynch, W. D., CWT
 Dauster, H. D., MM1c
 Dugan, J. F., MM1c
 Gibson, J. B., MM1c
 Harper, L. MM1c
 Haus, C., MM1c
 Hayes, J. F., MM1c
 Henderson, M. R., MM1c
 Huggard, J. J., MM1c
 Long, C. G., MM1c
 Loveridge, C. M., MM1c
 Marsh, A. G., MM1c
 Miller, A. O., MM1c
 Mullally, C. J., MM1c
 Phillips, O. H., MM1c
 Rainey, G. C., MM1c
 Schiller, W., MM1c
 Tarvin, C. R., MM1c
 Vouros, H., MM1c
 Buchinski, J. E., MM2c
 Howell, V. W., MM2c
 May, H. L., MM2c
 McKinnie, J. D., MM2c
 Sinnamon, W. H., MM2c
 Waters, N. H., MM2
 Brown, H. D., Msmth2c

Kaczowrowski, S. E., F1c
 Lee, C. F., F1c
 Massey, S. S., F1c
 Navin, P. J., F1c
 Winant, R., F1c
 Boatwright, W. R., F2c
 Crews, E. W., F2c
 Doane, A. A., F2c
 Foster, E. R., F2c
 Matthies, L. F., F2c
 Morrissey, G. R., F2c
 Sparkman, W. L., F2c
 Anderson, J., F3c
 Belcher, R. C., F3c
 Brown, H. W., F3c
 Farson, D. C., F3c
 Haar, J. M., F3c
 Kingsley, D., F3c
 McMillan, R. N., F3c
 Mihalka, P., F3c
 Miller, J. C., F3c
 Montgomery, H., F3c
 Renkien, D. L., F3c
 Roughton, G. A., F3c
 Telli, A. A., F3c
 Weiner, D., F3c
 Wilson, E. L., F3c



Medical

Department



Lieut. Comdr. (MC) B. V. Leamer Medical Officer
 Lieut. Comdr. (DC) G. W. Berry Dental Officer

~~Martin, G., CPhM~~
~~Gill, W. J., PhM1c~~
~~Sogars, C. B., PhM2c~~
~~Auvil, T. B., PhM2c~~
~~Chandler, T. C., PhM2c~~

~~Ebert, R. F., PhM2c~~
~~Keller, A. G., PhM3c~~
~~Allen, C. M., PhM3c~~
~~Ford, R. M., Senti c~~



C and R Department



Lieut. Comdr., C. F. Macklin, jr. First Lieutenant
 Lieut. V. F. Gordinier Asst. First Lieutenant
 Chief Bos'n C. L. Foushee "R" Division Officer
 Carpenter M. C. Kelly Asst. "R" Division Officer

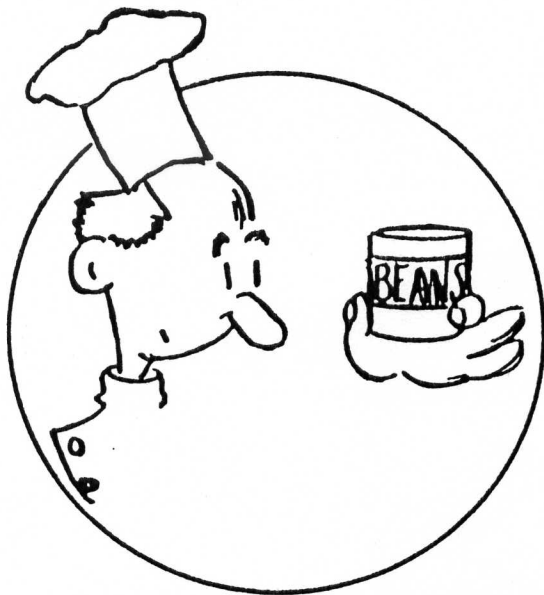
Heard, S. S., CBM
 Shirling, W. A., CBM
 Wright, H. A., CBM
 Herget, C. A., CCM
 Meehan, J. W., CSF
 Ernst, J.R., CM1c
 Mc Carty, G. E., SF1c
 Williams, R., SF1c
 Erwin, F. B., BM2c
 Woods, A. W., BM2c
 Schak, S. J., BM2c
 Lanclos, L. B., CM2c
 Elliott, G. P., SF2c
 Slattery, D. D., SF2c
 Torino, S. J., SF2c
 Lightfoot, G. W., Ptr2c
 Bobera, W. W., Ptr2c
 Prinz, W. C., Y2c
 Shinko, L., Cox
 Huggins, F. M., CM3c
 Dicicco, M., SF3c
 Millhollen, K. R., SF3c
 Shaw, R. D., SF3c
 Chrin, M., SF3c
 Hergert, H. L., SF3c
 Leight, G. P., SF3c
 Pathroff, A., SF3c
 Giovanneilli, J. A., Ptr3c

Davis, J. E., Sealc
 Moore, B. A., Sealc
 Welsch, A. W., Sealc
 Orlich, J. J., Sealc
 Babinski, R. J., Sealc
 Burlile, C. E., Sealc
 Quinn, H. M., Sealc
 Tinker, W. L., Sealc
 Mc Combs, J. E., Sealc
 Shawgo, D. F., Sealc

LAUNDRY
~~Coates, W. L., Sealc~~
 Johnson, F. M., Sealc
~~Freeman, H. L., Sealc~~
 King, M., Sealc

BARBER SHOP
 Terry, F. A., Sealc
 Mayne, R. R., Sealc
~~Dillon, J., Sealc~~
SODA FOUNTAIN
 Biddle, C. F., Sealc
 Tisdale, L. E., Sealc
 Ryan, T. C., Sealc

TAILOR SHOP
 Johnson, H. C., Sealc
 Stafford, W. J., Sealc



Supply Department



Lieut. (SC) J. S. Bierer Supply Officer
 Chief Pay Clerk W. M. Rotsten "S" Division
 Chief Pay Clerk G. B. Abbaduska "S" Division
 APC M. E. Sharp "S" Division

COMMISSARY STEWARD

Cole, W. W., CCStd

STOREKEEPERS

Schexnayder, E. T., CSK, USNR

Lott, J. G., CSK, USNR

Bielot, J., CSK

Badrick, A. SK1c

Jacobs, J. S., SK2c

Howard, P. J., SK3c

Tetrault, J. H., SK3c

Mc Creary, J. G., SK3c

Lagos, W. G., SK3c

Olds, H. W., SK3c

Kelly, H. T., Sea1c

Schandua, L. J., Sea2c

Thorsheim, L. M., Sea2c

Clay, C. R., Sea2c

Javins, C. M., Sea2c

Le Boeuf, J. W., Sea2c

Batterson, R. E., Sea2c

SHIP'S COOKS

~~Barr, L. S., SC1c~~

~~Resona, J. M., SC1c~~

~~Farmer, F. L., SC2c~~

~~Leone, E. A. G., SC2c~~

~~Tisdale, D. W., SC2c~~

~~Vanderford, P. V., SC3c~~

~~Barrell, W. M., SC3c~~

~~Athenon, S., SC3c~~

~~Haywood, S., SC3c~~

~~Gennarelli, D. B., SC3c~~

~~Wigner, P., SC3c~~

~~Elato, P., SC3c~~

~~Davis, C. A., Sea2c~~

BAKERS

~~Mayfield, R. G., Bkr2c~~

~~Gargin, P. M., Bkr3c~~

~~Mc Reynolds, J. L., Bkr3c~~

~~Lelidon, A. F., Bkr3c~~

~~Adams, A. R., Sea2c~~

~~Christos, S., Sea1c~~

OFFICER'S COOKS, STEWARDS

~~Lat, J., OS1c~~

~~Edralin, R., OC1c~~

~~Aviles, J., OC1c~~

~~Hidalgo, L., OS2c~~

~~Devega, O., OS3c~~

~~Peter, W., OS3c~~

~~Ladrado, I., OS3c~~

~~Domantay, F., OS3c~~

~~Gabarda, E., OC3c~~

~~Kelly, R. H., MAtt1c~~

~~Daniels, H. C., MAtt1c~~

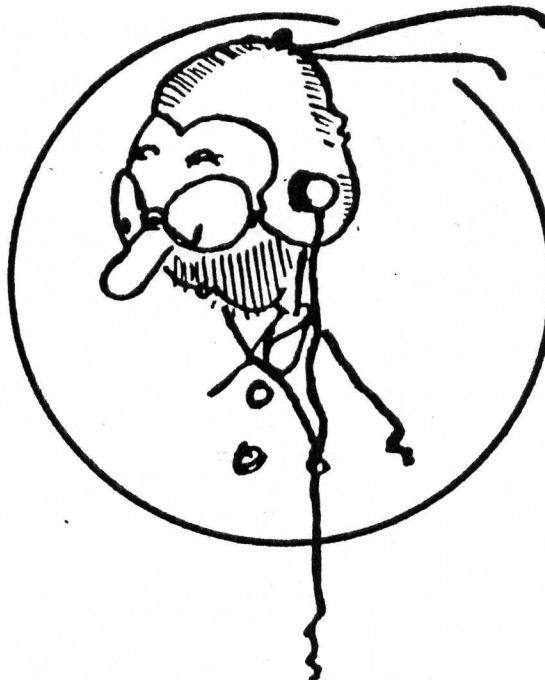
SUPPLY DEPARTMENT (Continued)

Valera, L., MAtt1c
 Cinco, R., MAtt1c
 Poquiz, I., MAtt1c
 Lewis, C. C., MAtt1c
 Declarador, C., MAtt1c
 Johnson, B. C., MAtt1c
 Goodwin, S. H., MAtt2c
 Mendiola, I. C., MAtt2c
 Marlin, R. F., MAtt2c
 Cooper, A. P., MAtt2c
 Hangbrough, T. L., MAtt2c
 Watford, J. W., MAtt2c
 Bosley, E., MAtt3c
 Charfauros, J. B., MAtt3c

Flores, P. G., MAtt3c
 Porter, J. H., MAtt3c
 Tucker, F. L., MAtt3c
 Owens, F. W., MAtt3c
 Taitano, F. S., MAtt3c
 Turner, R., MAtt3c
 Ponder, J. E., MAtt3c
 Ponder, J. W., MAtt3c
 Camacho, V. M., MAtt3c
 Rice, G. E., MAtt3c
 St. Clair, F. C., MAtt3c
 Mendiola, J. M., MAtt3c
 Leon Guerrero, T. B., MAtt3c
 Meho, J. L., MAtt3c



Aviation



Lt. Henry C. DeLong
 Senior Aviator

Ensign C. Garland, A-V(N)
 Junior Aviator

Ensign W. B. Downes, A-V(N) Junior Aviator

Ensign E. A. Kraft, A-V(N) Junior Aviator

Ferguson, R. C., ACOM
 Flanagan, ACMM
 Skinner, R. C., AMM1c
 Bartlett, J. H., AMM1c
 Massey, A. C., GM3c
 Tibbetts, J. G., RM2c
 Nance, L. M., AM1c
 Bocoock, E. E., AMM2c
 DeLisle, G. J., RM2c
 Downey, E. T., RM3c
 Yarber, J., AMM3c

Daigneau, A. E. G., Sealc
 McGregor, R. E., Sealc
 Fisher, R. A., Sealc
 Sapp, H. W., Sealc
 Potfay, J., Sealc
 Phillips, R. H., Sealc
 Zaugg, O. L., Sealc
 Hester, R. J., Sealc
 Kelly, A. E., Sealc
 Wilkinson, R., Sea2c
 Davenport, C. R., Sea2c



Navigation and Communication



Lieut. Comdr. Joel Newsom Navigator

Loshek, A. R., CQM

"N" DIVISION

Mazoway, L. A., QM1c
 Shay, J. N., QM1c
 Bender, L. S., QM2c
 Gehringer, W. A., QM3c
 Morey, E. G., QM3c
 Mitchell, R. H., QM3c

Dickenson, A. A., QM3c
 Richards, J. E., Y3c
 Keeper, J., Sealc
 Purdy, L. J., Sealc
 Warren, H. R., Bug1c
 Job, R. C., Sea2c

PRINT SHOP

✓ Carlson, E. W., Prtr1c
 ✓ White, R. M., Prtr2c

✚ Gravel, R. Z., Sealc
 ✚ Miller, L. A., Sealc
 ✚ Murray, E. C., Sealc

"C" DIVISION

Lieut. (jg) P. Wood Radio Officer

RADIO GANG

O'Brien, T. L., CRM
 Sheets, T. L., RM1c
 Daugherty, H. W., RM1c
 Moore, B. G., RM1c
 Patonai, F. J., RM1c
 Evans, R. G., RM3c
 Lester, W. E., RM3c
 Littman, W. L., RM3c
 Smith, J. S., RM3c
 Sims, R. E., RM3c
 O'Buckley, J. P., RM3c
 Morgan, L. E., RM3c
 Ireland, J. F., RM3c
 Groban, S. J., RM3c
 Mattie, R. R., RM3c
 Krabbe, F. R., RM3c

Barrow, J. W., RM3c
 Kight, D. S., RM3c
 Lewis, G. A., RM3c
 Budiselich, M. J., Sealc
 Ranier, S. H., Sealc
 Kreiski, L. F., Sealc
 Melton, J. H., Sealc
 Hartsuyker, G., Sealc
 Mahaffey, R. H., Sealc
 Lizotte, A. J., Sealc
 Plank, R. P., Sealc
 Rhoden, A. D., Sea2c
 Gray, R. L., Sea2c
 Heimer, H. J., Sea2c
 Hecht, R. R., Sea2c
 Ebner, W. L., Sea2c
 Gibson, F. L., Sea2c

"C" DIVISION (Continued)

Ensign G. M. Hawes Signal Officer

SIGNAL GANG

Maguire, W. F., CSM
Soles, E. B., SM1c
Lowther, F. D., SM2c
O'Brien, W. J., SM2c
Kane, K. W., SM3c
Curly, R. E., SM3c
Irving, J. C., SM3c

YEOMEN FROM THE C DIV.

Kurovsky, P., CY
Moss, B. H., CY
Blaszcyk, A. J., Y2c
Ulma, W., Y3c

Rose, W. H., Sealc
Barnes, E. L., Sealc
Waldron, H. J., Sealc
Brasher, H. W., Sealc
Pardi, J, J., Sealc
Preston, A. F., Sea2c
Burkman, H. B., Sea2c
Ryan, W. H., Sea2c

Gioffre, L., Sealc
Crosby, F. J., Sealc
Kelley, T. J., Sea2c
Mers, J. F., Sea2c



Flag

Personnel



YEOMEN

Kennedy, R. A., CY
 Hansen, L., Y1c
 Nowicki, J. R., Y1c
 Benson, A. L., Y3c
 Mardon, F. C., Sealc

BARGE

Schulenburg, F. C., BM1c
 Jett, J. E., MM1c
 Carpenter, V. P., Sealc
 Casinger, W. A., Sea2c
 Nelson, C. J., Sea2c

MESSMEN

Edralin, R., OC1c
 Hidalgo, L., OS2c
 Declarador, C., MAtt1c
 Valera, L., MAtt1c
 Cinco, R., MAtt1c
 Mendiola, I. C., MAtt2c
 Camacho, V. M., MAtt3c

SIGNALMEN

Jones, E., QM1c
 Harris, C. A., SM1c
 Kottke, L. W., SM2c
 Airhart, O. W., SM3c
 Hughes, F. L., SM3c
 Crossett, E. L. jr., Sealc
 Jones, C. W. jr., Sealc

RADIOMEN

Turnipseed, T. E., RM1c
 Howard, J. C., RM2c
 Berg, A. H. jr., RM3c
 Delap, J. D., RM3c
 Janes, W. A., RM3c
 Malanowski, R. S., RM3c
 Crockett, G. M., Sealc
 Diana, M. J., Sealc
 Knickerbocker, H. M., Sealc
 McDaniel, V. E., Sealc
 Beck, M. G., Sea2c

PRINTERS

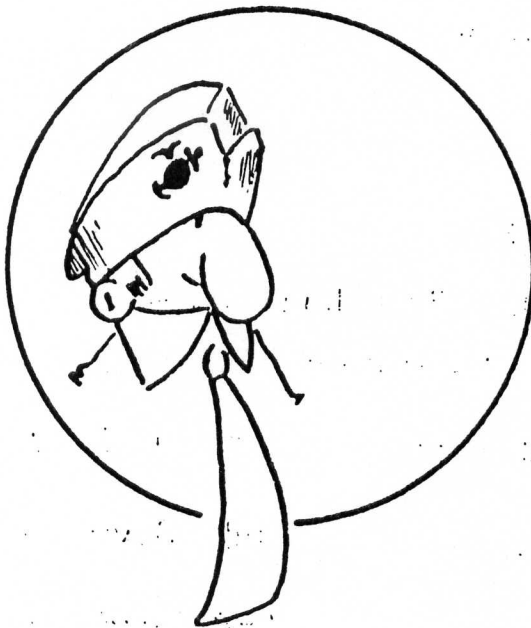
Carlson, E. W., Prtr1c
 White, M. M., Prtr2c

MUSICIANS

Fox, J. L., Bmstr
 Cochell, W. S., Mus1c
 Lundgren, J. C., Mus1c
 Santerre, L., Mus1c
 Smith, H. A., Mus1c
 Altwies, J. E., Mus2c
 Berg, H. A., Mus2c
 Cull, W. W., Mus2c
 Dunnington, C. T., Mus2c
 Essert, A., Mus2c
 Johnson, J. J., Mus2c
 Lyman, W. R., Mus2c
 McClain, J. R. jr., Mus2c

FLAG COOK

Tisdale, D. W., SC2c



Marine

Detachment



4
 x
 Captain E. L. Lyman, U. S. M. C.
 2nd Lieut. W. B. Carneal, Jr., U. S. M. C.

FIRST SERGEANT
 Bishop, Harold

PLATOON SERGEANT
 Patrick, Joseph F.

SERGEANTS
 Malone, John C.
 Moller, George A.

CORPORALS
 Bingham, William E.
 Cappleman, Victor P.
 Hospodar, Paul S.
 Ragan, Glenn E.
 Sheehan, Charles I.

PRIVATE FIRST CLASS
 Brewster, Charles H.
 Burton, Howard L.
 Cockerill, LaVern S.
 Cox, Albert D.
 Darr, Myron R.
 Gorter, Russell T.
 Grady, George F.
 Hacker, Alfred A.
 Jacukiewicz, Henry J.
 Lyons, Thomas.
 McLaughlin, John J.
 Nephew, Darrell F.
 Rockett, Earl M.
 St. Peter, Roland A.

Pasinski, Walter C.
 Reynolds, Lewis G.
 Thiede, Edward A.
 Villaret, Paul G.

FIELD MUSIC FIRST CLASS
 McKelvy, Gordon C.
 Lake, William W.

ASSISTANT COOK
 Abbott, Robert E.

PRIVATE
 Barnett, Alfred W.
 Cooley, Charles M.
 Edgell, Thomas J.
 Hasslen, Edgar S.
 Haworth, George M.
 Hemmer, Russell F.
 Matheson, Shulyar L.
 Hicks, Warren S.
 Macklin, Cecil C.
 Myhan, Maurice F.
 Overholser, Dwight E.
 Ricord, Maurice M.
 Scafiro, Richard A.
 Sundell, Robert.
 Specht, Lester E.
 Wilson, Harold G.
 Woods, Harry B.
 Youngman, Robert L.

Program



Music by

"DON RICARDO" and his N. B. C. Recording Orchestra

(MR. RUSSELL STAPLETON — Master-of-Ceremonies)

1. Empty Saddles in the Old Corral . . . 1st Division
2. St. Louis Blues 2nd Division
3. Alice Blue Gown 3rd Division
4. All This and Heaven Too . . . 4th Division
5. It's a Blue World 5th Division
6. Liebestraum 6th Division
7. Deep Purple 7th Division
8. Imagination "A" Division
9. Rose Room "B" Division
10. Moon Love "C" Division
11. Whispering "E" Division
12. Sierra Sue "F" Division
13. To You Sweetheart . Wives and Sweethearts

Program



14. Fools Rush In "H" Division
15. Practice Makes Perfect "M" Division
16. Blue Berry Hill "N" Division
18. At The Balalaika "R" Division
19. In A Little Grass Shack "V" Division
20. Begin The Beguine Flag Personnel

--: GRAND MARCH --:

--: FLOOR SHOW --:

JACKSON and BLACKWELL
(Comedy Ballroom Team)

EDITH DAVIS
(Tap Stylist)

HAWAIIAN TRIO
(Hawaiian Nights)

KARRE-LEBARON
(International Dance Team)

BUFFET SUPPER

JITTER-BUG CONTEST



"STAR SPANGLED BANNER"

(The first dance of the evening will be reserved for the Gentlemen and their dates.
Breaking will be permissible on dances thereafter.)
(Dancing until one o'clock in the morning)

Autographs

Paul Egan

Anchor

